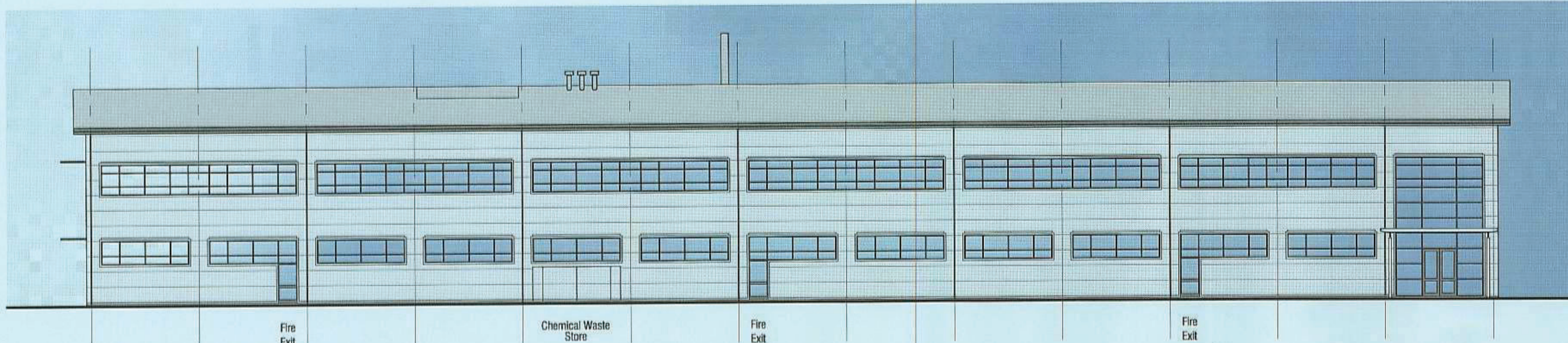
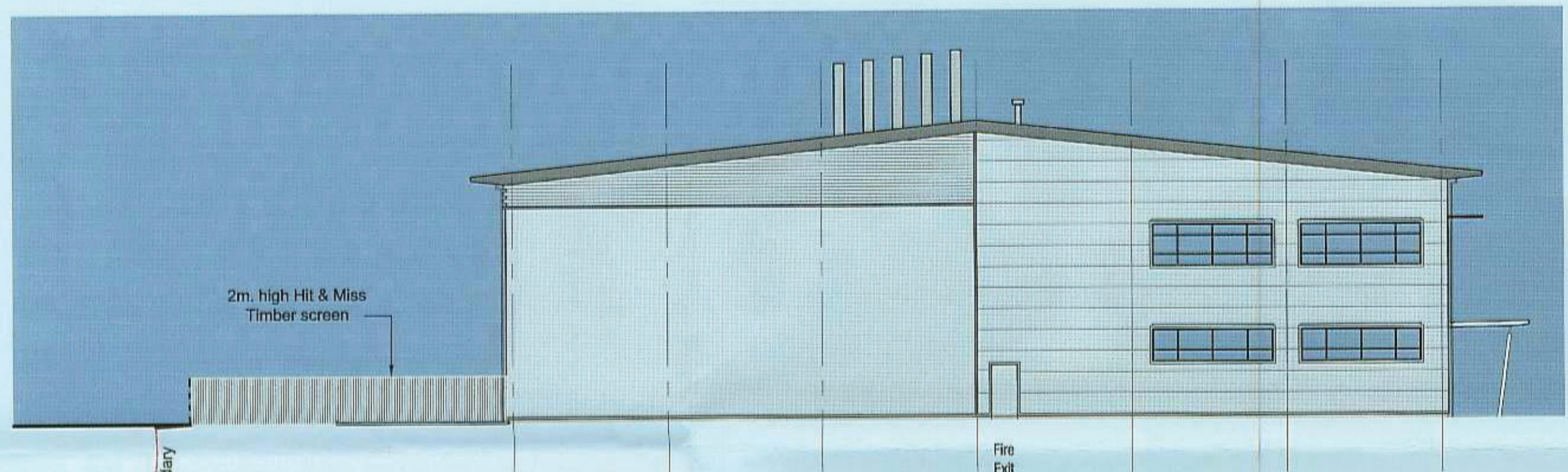


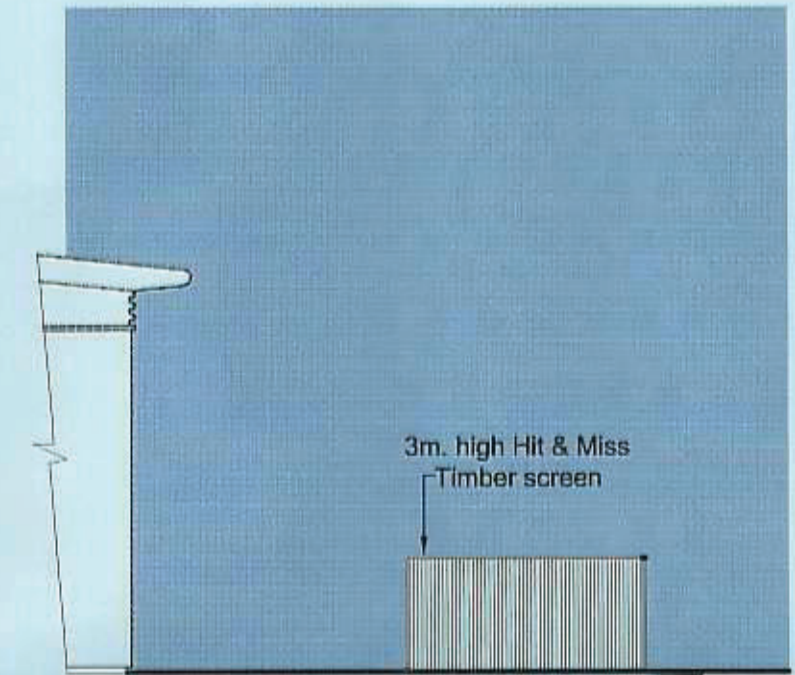
notes  
 This drawing and design is the copyright of aja architects llp and must not be reproduced in part or in whole without prior written consent. Contractors must verify all dimensions on site before commencing work or preparing shop drawings. If in doubt? ASK.



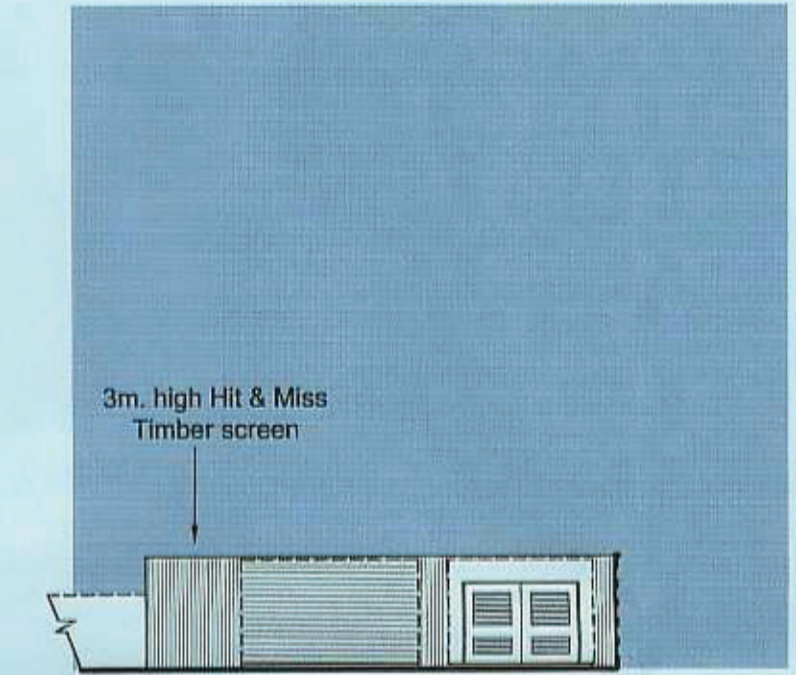
South East Elevation



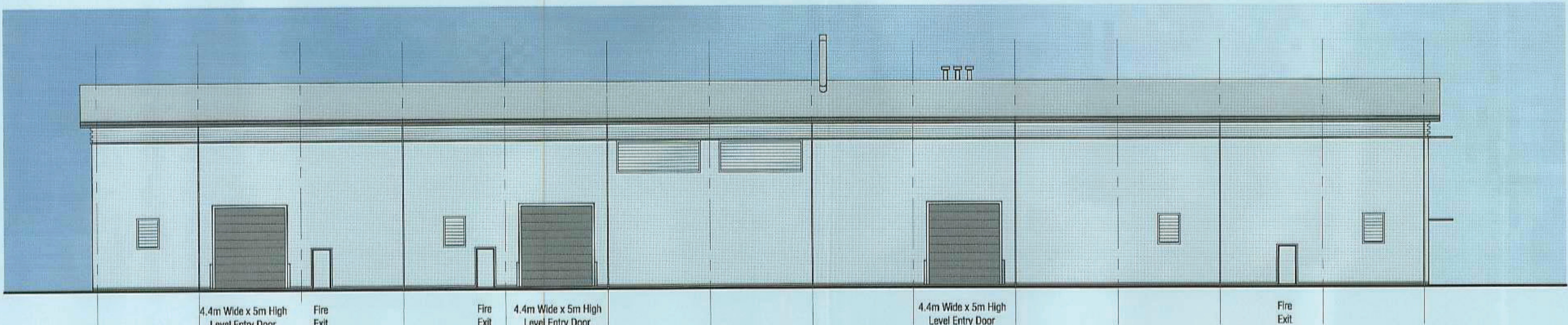
South West Elevation



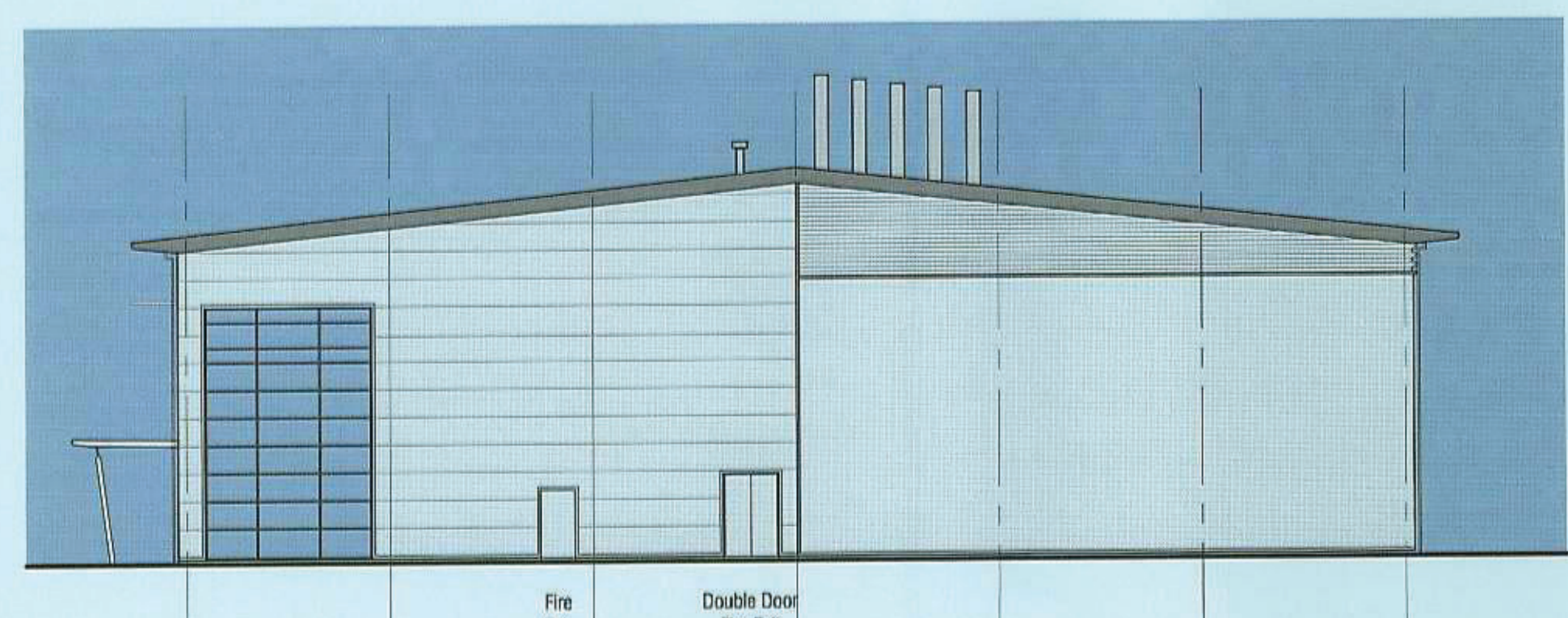
North East Elevation  
Service Yard Timber Screen



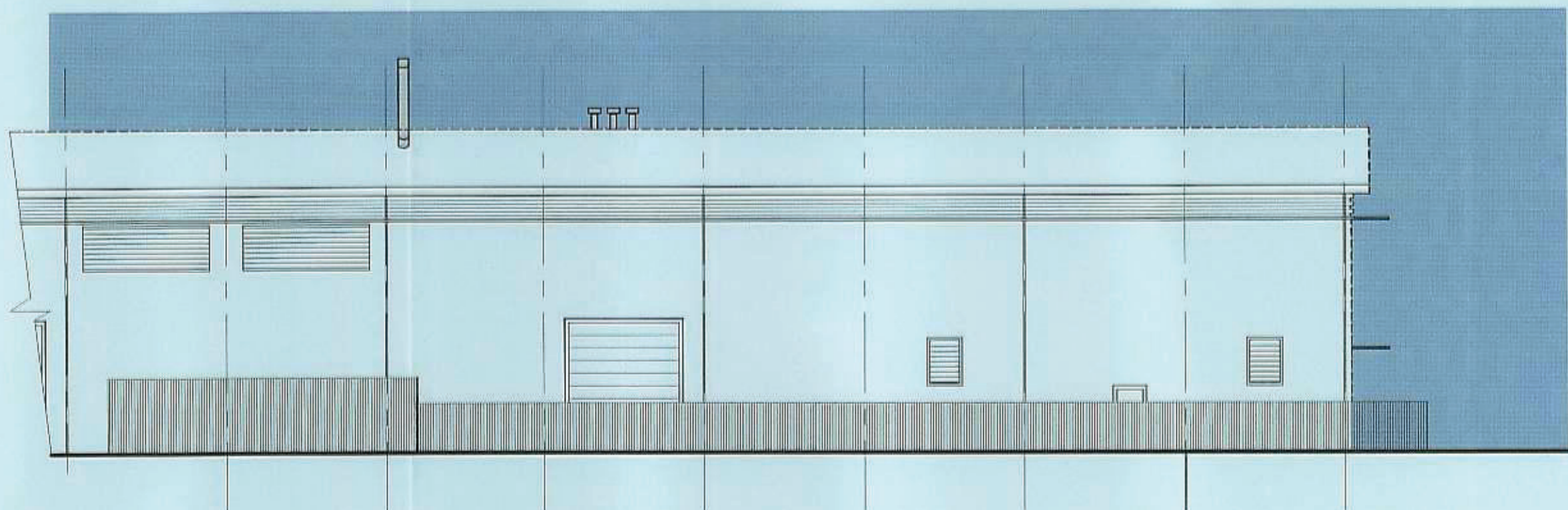
South East Elevation  
Service Yard Timber Screen



North West Elevation



North East Elevation



North West Elevation  
Service Yard Timber Screen

Schedule of Materials

- Roof  
HPS200 Ultra Finish profiled metal cladding panels  
Colour: Goosewing Grey (HPS200 Ultra Finish)
- Eaves/Fascia  
PPC aluminium bull-nose profile  
Colour: Merlin Grey RAL 180 40 05
- Walls - South East Elevation to Ferri Avenue and Returns to Midway Along South West and North East Elevations  
HPS200 Ultra Finish horizontally spanning composite micro-rib profile architectural wall panel system  
Colour: Metallic Silver RAL 9006
- Walls - North West Elevation and Returns to Midway Along South West and North East Elevations at Low Level  
HPS200 Ultra Finish vertically spanning trapezoidal profile built up wall cladding system  
Colour: Metallic Silver RAL 9006
- Walls - North West Elevation and Returns to Midway Along South West and North East Elevations at High Level  
HPS200 Ultra Finish horizontally spanning half round profile built up wall cladding system  
Colour: Metallic Silver RAL 9006
- Walls - North West Elevation and Returns to Midway Along South West and North East Elevations - Feature Band  
HPS200 Ultra Finish flashing  
Colour: Merlin Grey RAL 180 40 05
- Windows/Doors  
PPC frames with grey tinted anti-sun glazing and grey booklike panel spandrels where required  
Colour: Graphite Grey Frames
- Entrance Canopy  
HPS200 Ultra Finish profiled metal cladding panels to roof with PPC aluminium bull-nose profile fascia and soffit  
Colour: Goosewing Grey HPS200 Ultra Finish roof and White RAL 9003 fascia and soffit
- Canopy Support Columns  
Exterior grade paint protection system  
Colour: White RAL 9003
- Briar Soffit  
PPC coated aluminium louvers  
Colour: White RAL 9003
- Personnel Doors  
Paint: Finish metal faced flush doors  
Colour: Metallic Silver RAL 9006
- Loading Doors  
Colour coated insulated sectional overhead metal doors  
Colour: Merlin Grey RAL 180 40 05

no. date revision by



aja architects llp T: 024 7625 3200  
 1170 Elliott Court F: 024 7625 3210  
 Herold Avenue  
 Coventry Business Park E: aja@aja-architects.com  
 COVENTRY CV5 6UB W: www.aja-architects.com

aja architects llp is a limited liability partnership registered in England No. OC326721  
 client



project  
 Proposed R&D Process Building  
 Plot 9  
 Harwell Science Park

drawing  
 Proposed Elevations

11/02/11/EUL



scale 1:200 drawn spp  
 checked date 02/12/11

no  
 5192 - 063  
 PLANNING